

BRUMA  
del estrecho de marín

# PARCELA PARTICIONES

(single-vineyard wine)



The Particiones vineyard, located in the region of Tobarra, Albacete, is probably the oldest vineyard in the Bruma collection. **The vines were planted in 1960.**

**The vineyard boasts sandy soils which are planted not only with Monastrell but also Airén.** It's one of the most complex wines in the range. **The coupage of these varieties and the type of soil give rise to a smooth, elegant wine rather than a full-bodied wine.**

The name, Particiones, derives from the fact that in the past the estate belonged just to one individual yet over

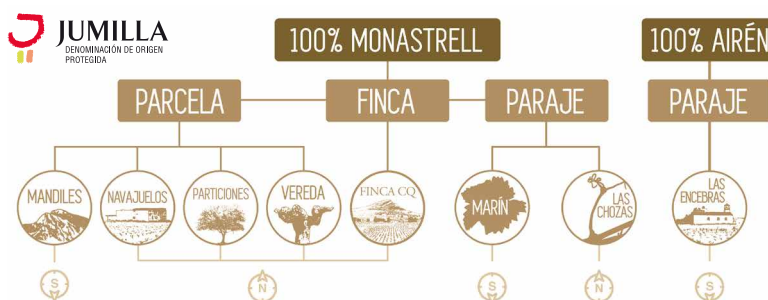
the generations it has been sold-off in parts and currently the vineyard, the olive groves, and the almond orchard all have different owners.

**The philosophy behind the Bruma project is to bottle the singular character of each individual vineyard** and, true to its name, Particiones, which in this case refers to 'allocation of land', has again revolutionised its character. A substantial number of what were predominantly Monastrell vines have been uprooted to leave the **vineyard with a more balanced distribution of red and white grapes.**

## THE COLLECTION

This exceptional project is the personal brainchild of Elena Pacheco and Isio Ramos aimed at making **100% Monastrell wines from select DOP Jumilla vineyards.**

Using vineyard husbandry and winemaking techniques acquired from local viticulturists, they skilfully craft their wines to **reach their full expression with regard to microclimate, soil, location, and the age of the vines.**





## CHARACTERISTICS

Brand	Bruma del Estrecho de Marín / <b>Parcela Particiones</b>
Appellation	DOP Jumilla
Type	Red wine
Vintage	2023
Variety	Monastrell and Airén
Alcohol	11.5 % by vol.
Production	1,744 bottles

## VINEYARD

Name	The name of the plot is Particiones. Located near the town of Tobarra, northern part of DOP Jumilla.
Description	Ungrafted, goblet-trained bush vines planted in dry, non-irrigated soils. Spur-pruned. Planted in low density (around 1.400 to 1.600 vines per hectare).
Altitude	720 metres above sea-level.
Age	Planted in 1960.
Soil	Sandy-loam.
Climate	Mediterranean climate with a continental character (wide diurnal temperature variation).
Annual rainfall	219 mm in 2023.

## PRODUCTION

Harvest	August 2023, hand harvested in cases of 12 kg.
Production	Whole bunches of grapes are placed in tanks where they undergo a very short maceration. Subsequently, it is pressed and fermented in stainless steel tanks at a controlled temperature of 20 °C with natural yeasts.
Bottling date	January 2024

## TASTING

Serving temperature	14 °C - 16 °C
Color	Low intensity coral pink color.
Nose	Notes of fresh red fruit and a light citrus background.
Palate	Fruit-driven and silky, with a very refreshing finish
Food pairing	For us, it would be our summer red wine that pair well with a <i>paella de verduras</i> , <i>paella de marisco</i> and also ideal for any kind of salads.

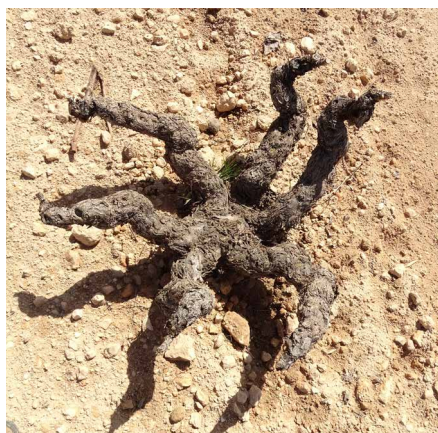
### Contact:

info@brumadelestrecho.com  
T. +34 968 78 13 40



# BRUMA

del estrecho de marín



**Contact:**  
[info@brumadelestrecho.com](mailto:info@brumadelestrecho.com)  
T. +34 968 78 13 40

  
**Viña Elena**  
BODEGAS